

# EXD QT2500 QUARTER-TURN ACTUATOR

## COMPACT QUALITY

EXD 2500 quarter-turn actuator is suitable for medium sized butterfly and ball valves with an operating torque below 2300 Nm, and suitable for use in a wide variety of industrial environments.

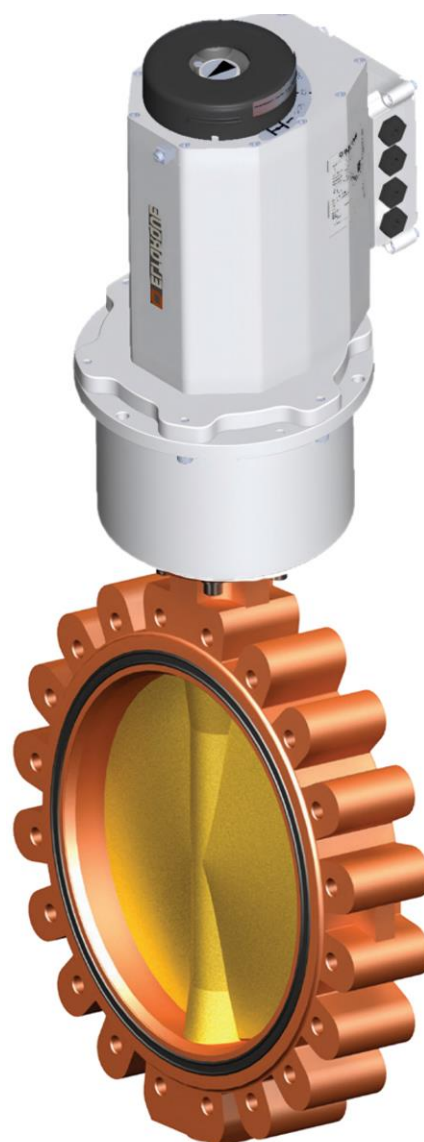
**ELTORQUE** offers a high level of precision in the control of valves. Excellent controlling possibilities, low cost of installation and operation, and no need of maintenance make ELTORQUE the future solution.

### FEATURES:

- Max torque: 2300Nm
- Valve range: DN400-DN600
- Mechanical self-lock device locks valve position
- Absolute position feedback
- Local override protection (magnet hall sensor)
- Strong & Robust enclosure
- Configurable torque, closing time and position
- Full valve control with positioning on IAS
- Low power consumption,
- Manual emergency override as standard
- Quarter-turn (90°) travel, can easily be configured to an operation area within the range 0-359°
- Easy commissioning
- Flexible control interfaces for easy integration with a wide range of control systems

### FEATURES:

- CANOpen, Digital, Analog interface



# EXD QT 2500

## SPECIFICATIONS

EXD QT2500	
MAX-MIN TORQUE	2300 Nm
MIN-MAX CLOSING TIME 0-100% / 0-90 °	109-214 sec
VALVE SPINDLE ADAPTER	5Q36 Depth 60mm
VALVE FLANGE	F12,F14,F16 (According to ISO5211)
VALVE APPLICATIONS	Butterfly or ball valves with part-turn operation. Examples butterfly valves: DN400-DN600
PHYSICAL PROPERTIES	
WEIGHT	50 kg
DIMENSIONS H/W/D	451/247/294 mm
HOUSING	IP68 (10m 72hrs) - Corrosion protected aluminum enclosure
COLOR	RAL9006 marine painting for OPENDECK
OPERATING CONDITIONS	-25 - 70°C
TEMPERATURE PROTECTION	Motor current is switched off in case of over-heating. Stator coils serve as heating elements in case of low temperatures.
ELECTRICAL AND CONTROL PROPERTIES	
POWER SUPPLY	110 - 240 V AC $\pm$ 10%, 50/60HZ, Max 130W, Standby: 20W
CABLE GLANDS	Up to four M20 glands allows serial connection of power supply and fieldbus wiring. Threaded holes in actuator capsule. Use IP68 glands for all wires, EMC type for fieldbus wiring.
INTERFACE OPTIONS	<b>Digital:</b> 2 DI (Open - Close) & 3 DO (Open - Closed - Alarm) <b>Analogue:</b> AI (Set position), AO (Feedback position) & DO (Alarm). 4-20 mA AI/AO signal. <b>CANopen Fieldbus:</b> Max 127 nodes per network. Fieldbus allows positioning and other extended control of actuator. Number of nodes will be limited by control system.
POSITION SENSOR	Resolution 0,39%/ 0,35° & range 360° Absolute position sensor provides correct feedback even after a power failure.
CONFIGURATION	USB connection to PC with E3C
CONFIGURABLE PARAMETERS	Open and Closed positions. Actuator speed, torque and valve position regions. Inverted IO or fieldbus parameters depending on control interface
EMERGENCY AND SAFETY	
MANUAL OPERATION	Standard feature using fixed hand-wheel. Mechanical valve position indicator.
COVER OF HAND WHEEL	Can be removed and refitted without tools. Protects mechanism against mechanical damage and foreign objects.
NUMBER OF TURNS	196 for 0-100%/ 0-90° valve operation
CERTIFICATIONS 3	CE-marked, DNV

EXD QT2500

